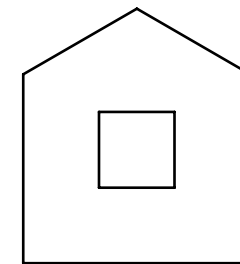
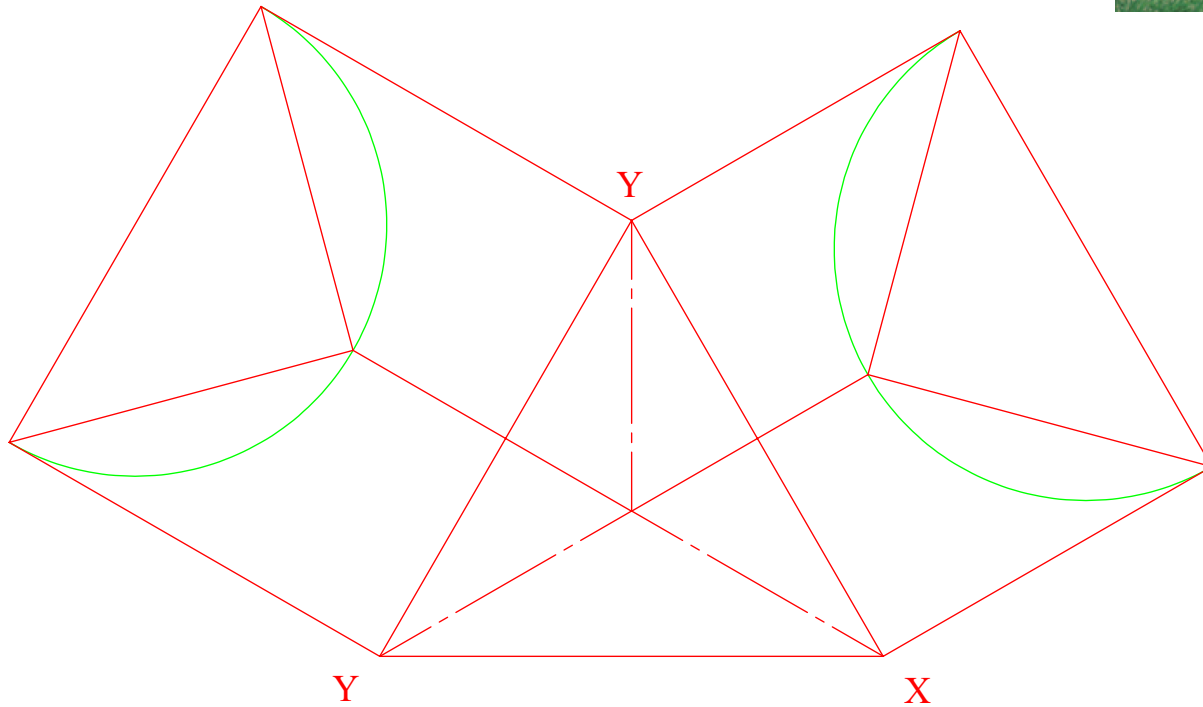
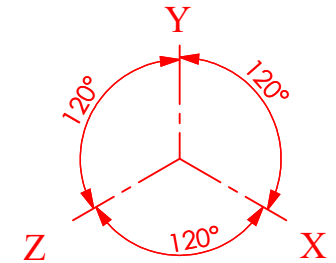


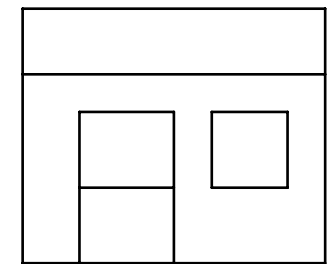


A child's playhouse is shown in the photograph across. The elevation and end elevation of the house is also included.

Draw the isometric projection of the house having axes inclined as shown



END-ELEVATION



ELEVATION

**SOLIDWORKS Educational Edition.  
For Instructional Use Only.**



TECHNOLOGY  
SUBJECTS  
SUPPORT  
SERVICE

DESIGN & COMMUNICATION GRAPHICS

TITLE:

**WORKSHEET 2**

DRAWN BY: YOUR NAME HERE

SIZE  
A4

UNLESS OTHERWISE SPECIFIED ALL  
DIMENSIONS ARE IN mm

SCALE: 1:2

Date: 11/10/2016

SHEET 1 OF 1

