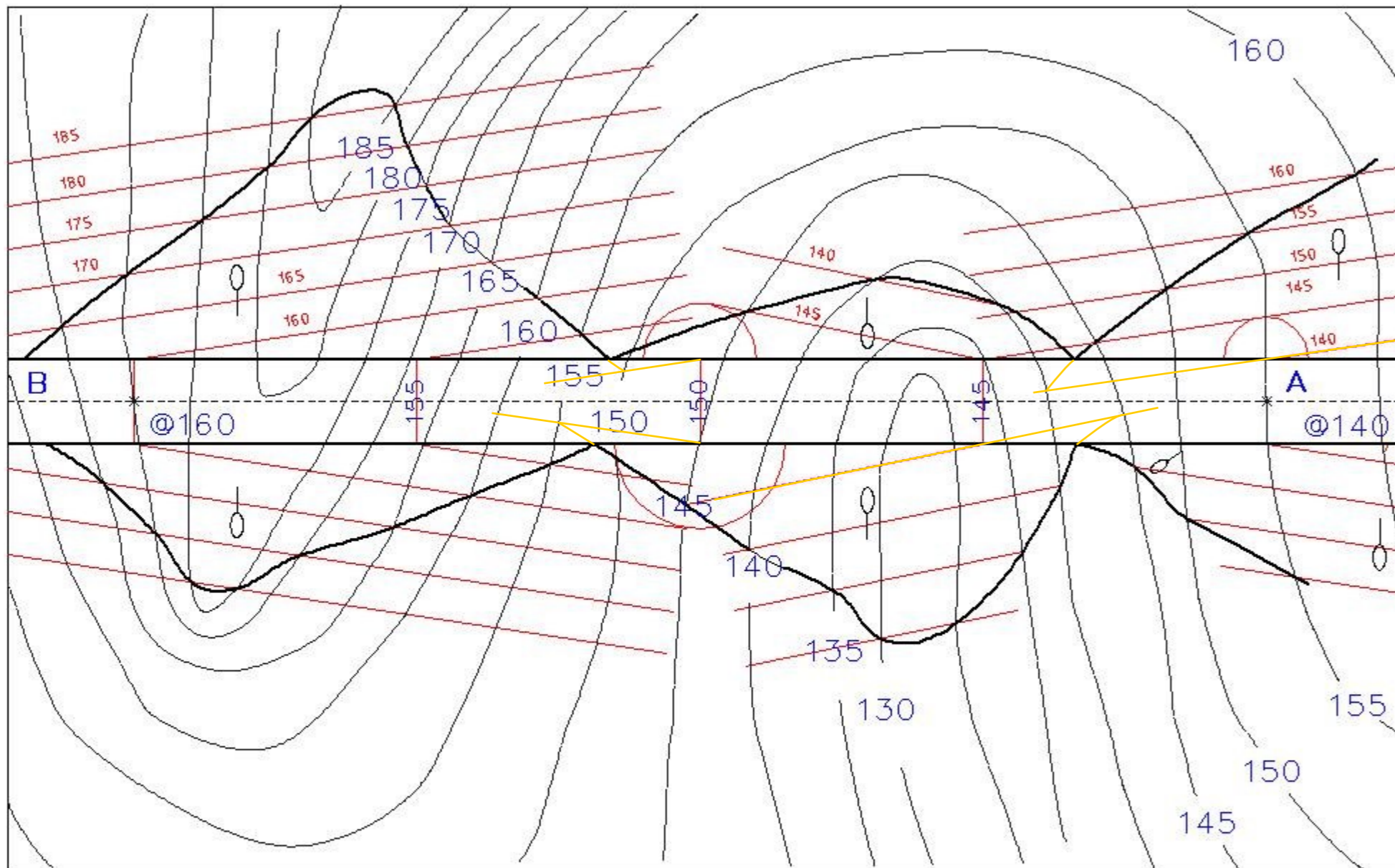
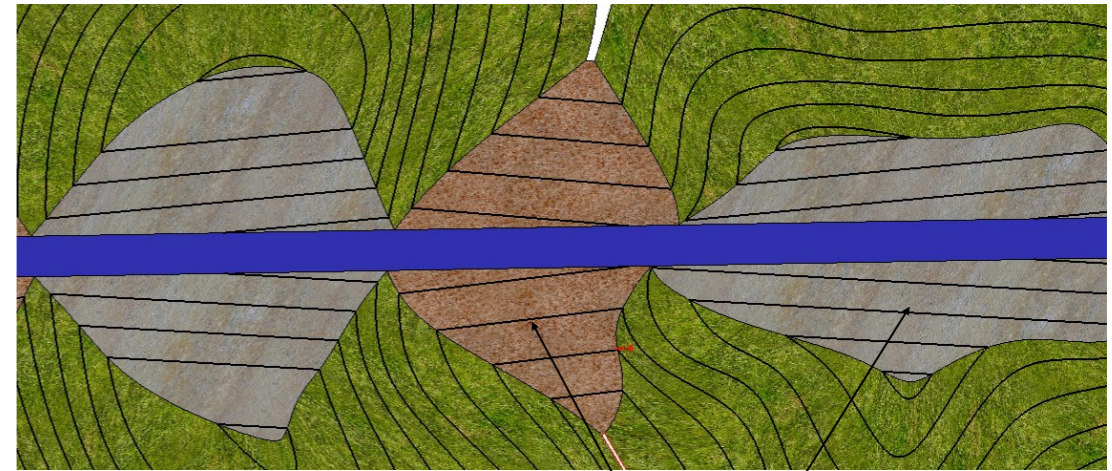


## EARTHWORKS 4

The accompanying drawing shows ground contours at five-metre intervals. AB is the centreline of a proposed roadway having the following specifications.

- (i) formation width as shown.
- (ii) formation level at A is 140m
- (iii) A to B is 1:10 rising
- (iv) side slopes for cuttings 1 in 1.5
- (v) side slopes for embankments 1 in 2.

On the drawing show the earthworks necessary to accommodate the roadway.



In a sloping road the lines on the cut/fill surface will always be at an angle to the edge of the road

