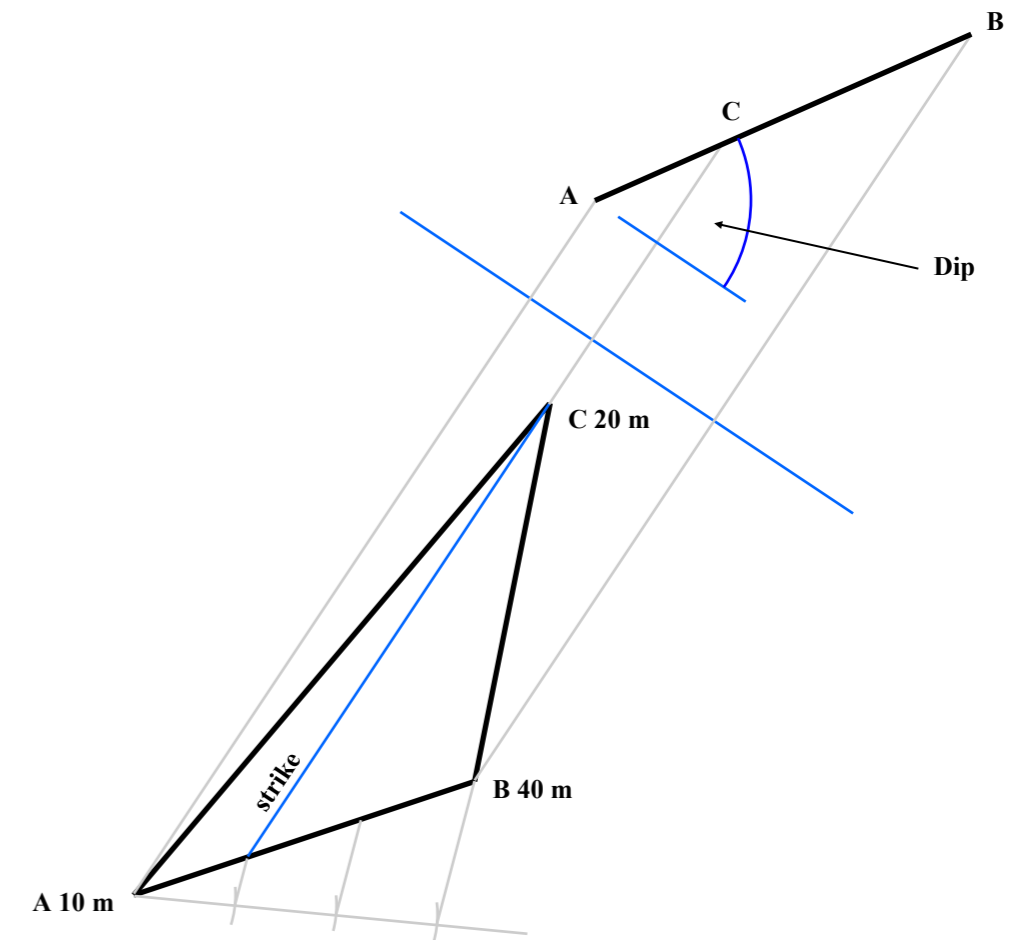
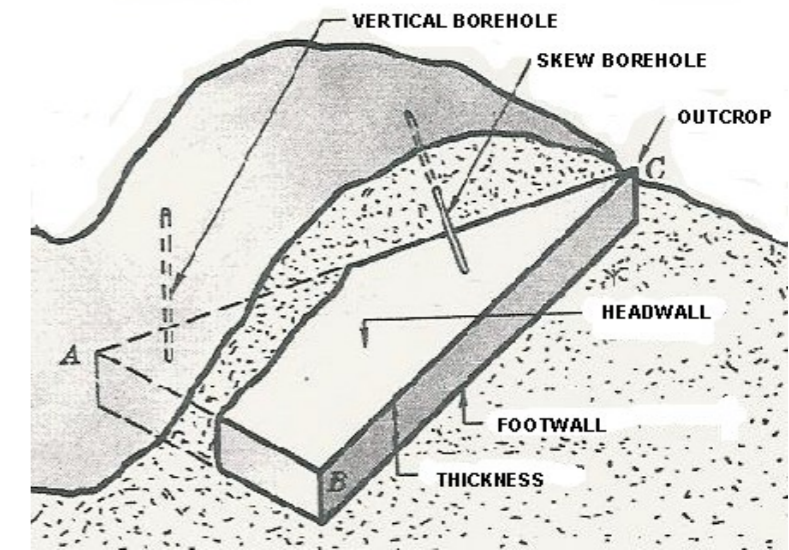
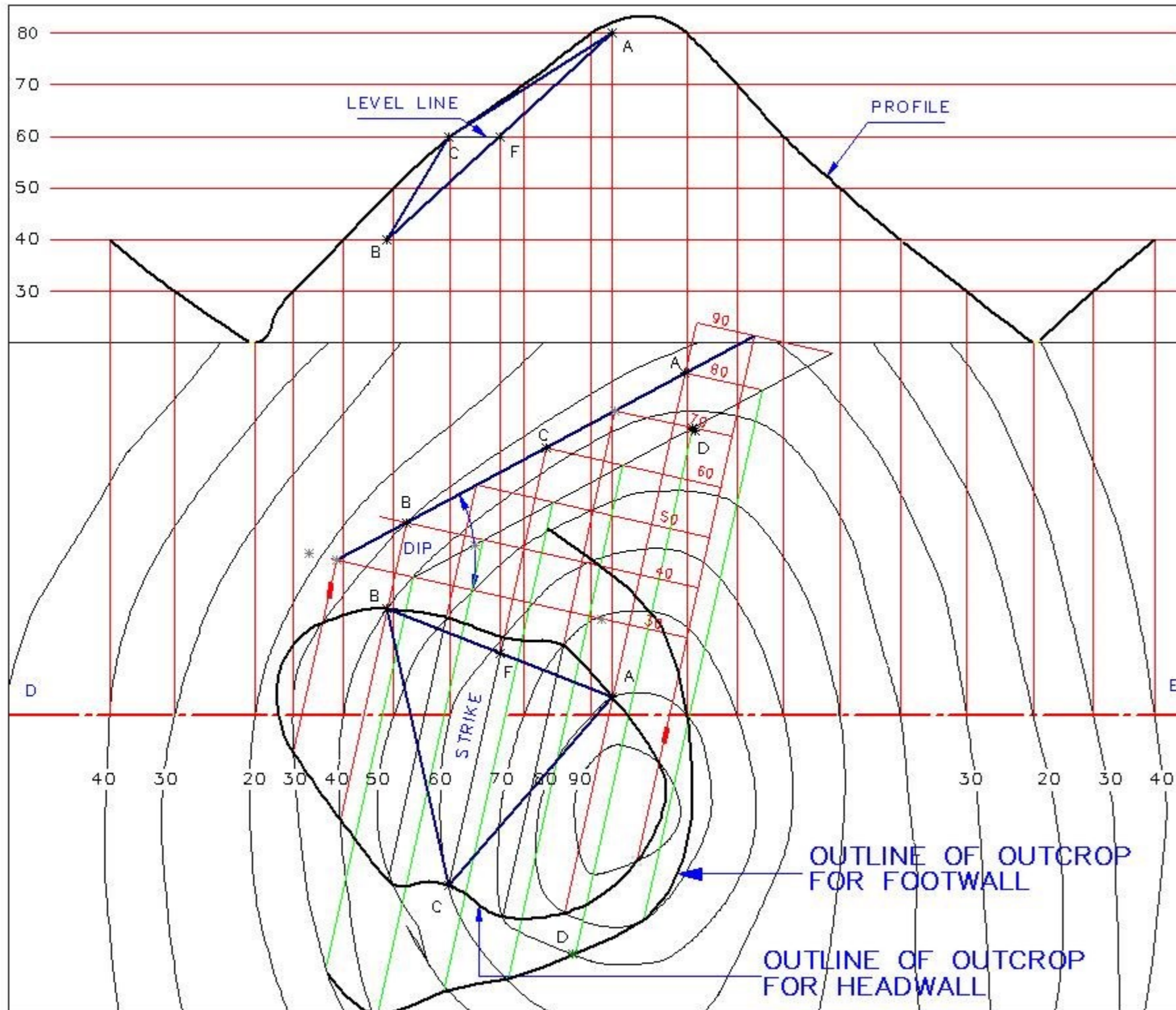


MINING 3

The accompanying drawing shows ground contours at ten-metre intervals on a map.

A, B and C are outcrop points on the headwall of a stratum of ore and D is an outcrop point on the footwall.

- In the space provided draw a vertical section (profile) on the line EF.
- Determine the dip, strike and thickness of the stratum
- Determine the outline of the outcrop for the headwall and the footwall of the stratum.



A, B and C are outcrop points on a stratum of ore whose altitudes are 10 m, 40 m and 20 m, respectively.

Determine the dip and strike of the stratum without drawing the elevation.