

# Changing the SolidWorks Student Design Kit Serial Number

Any existing customers may change their serial number now to: **9020 0031 1111 2244 5Y4N D2F9**. The 2010-2011 SDK will be available on the regular download site ([www.solidworks.com/europeansdk](http://www.solidworks.com/europeansdk)) through August 31<sup>st</sup> 2012.

1. This document outlines how to change the SolidWorks Serial Number for an existing Student Design Kit install.
2. The full ADMINISTRATOR logon must be used to change the serial number for SolidWorks
3. Navigate to the “Control Panel” and “Add/Remove Programs”.

Scroll down to SolidWorks 2010 and click “Change” (see Figure 1).

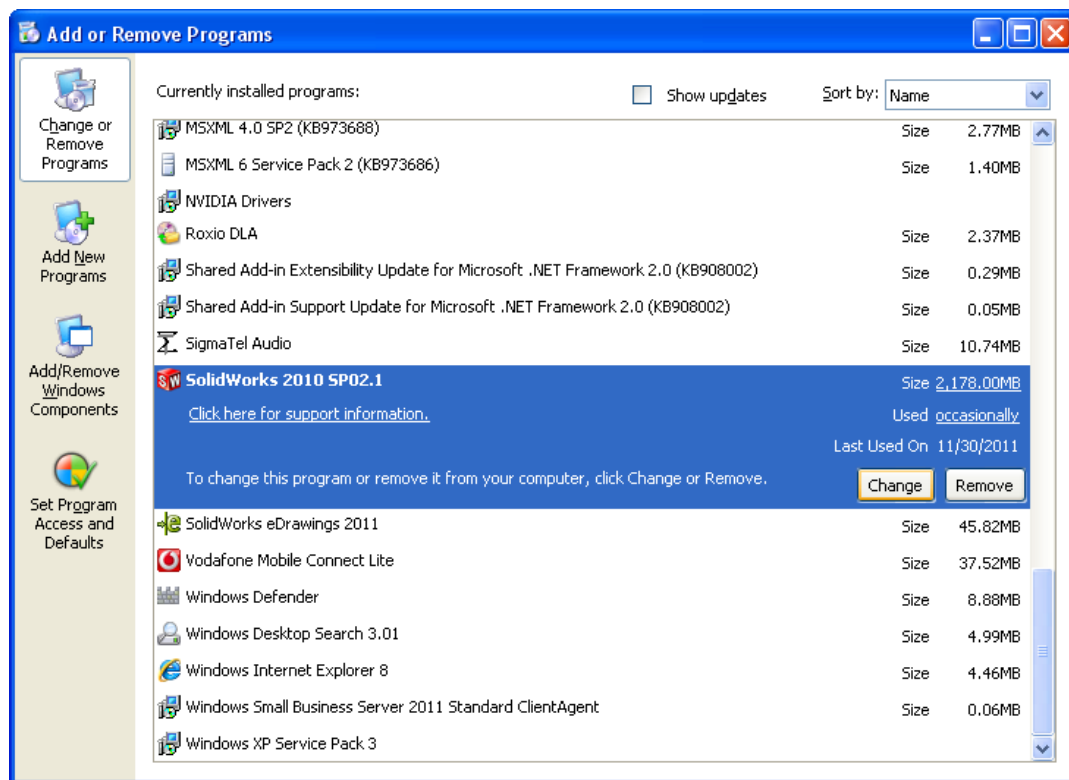


Figure 1.

4. The “SolidWorks Installation Manager” will now start.  
On the “Modify the existing individual installation” page, and click Next to continue with the modification.  
(see Figure 2).

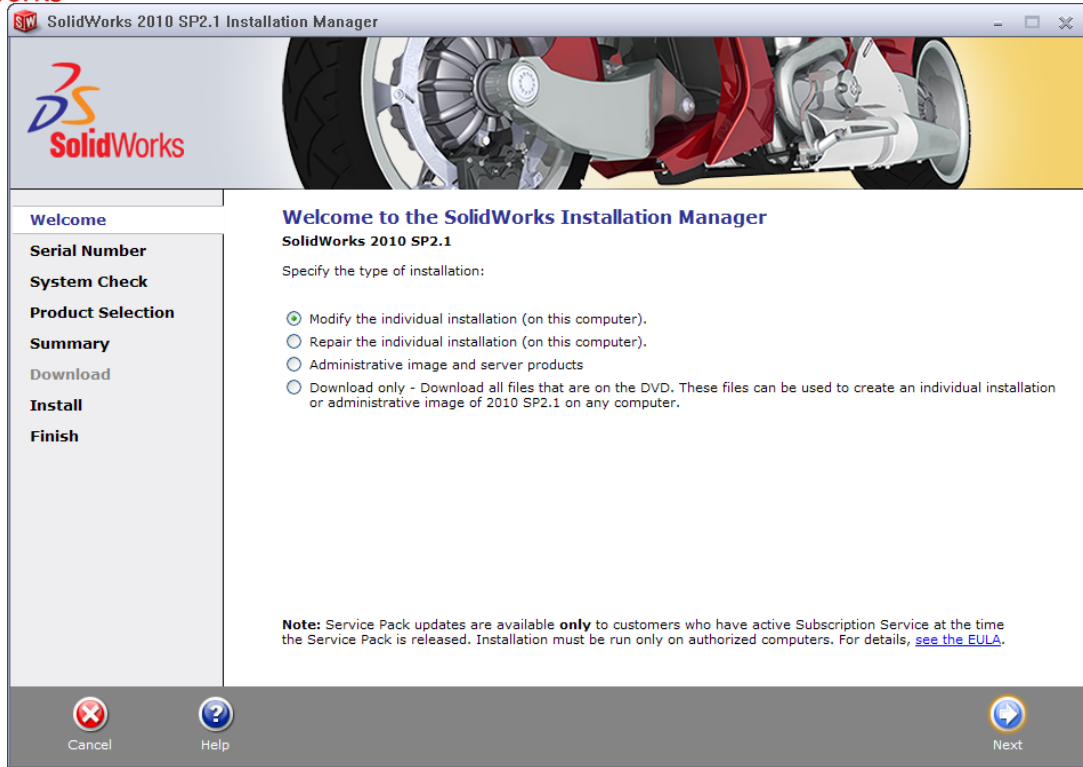


Figure 2.

5. After clicking "Next" **The serial number that appears must be replaced.**

Enter the following new Serial Number: **9020 0031 1111 2244 5Y4N D2F9** and click Next (See Figure 3. (If you do not have the Internet, click Next to proceed.)

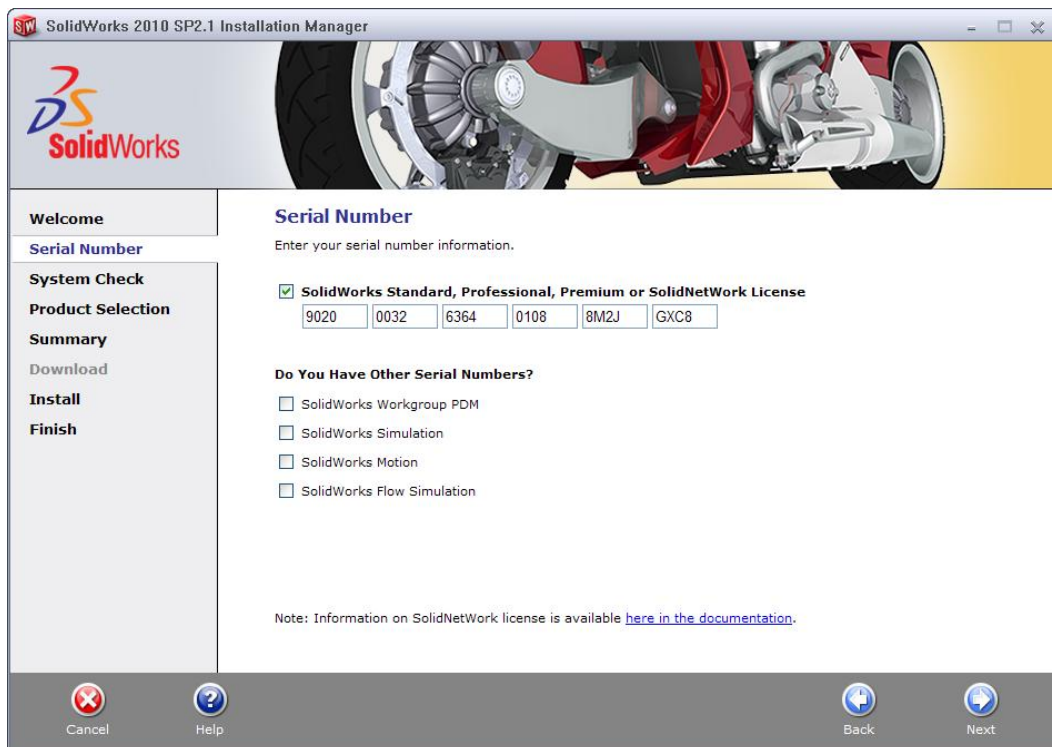


Figure 3.

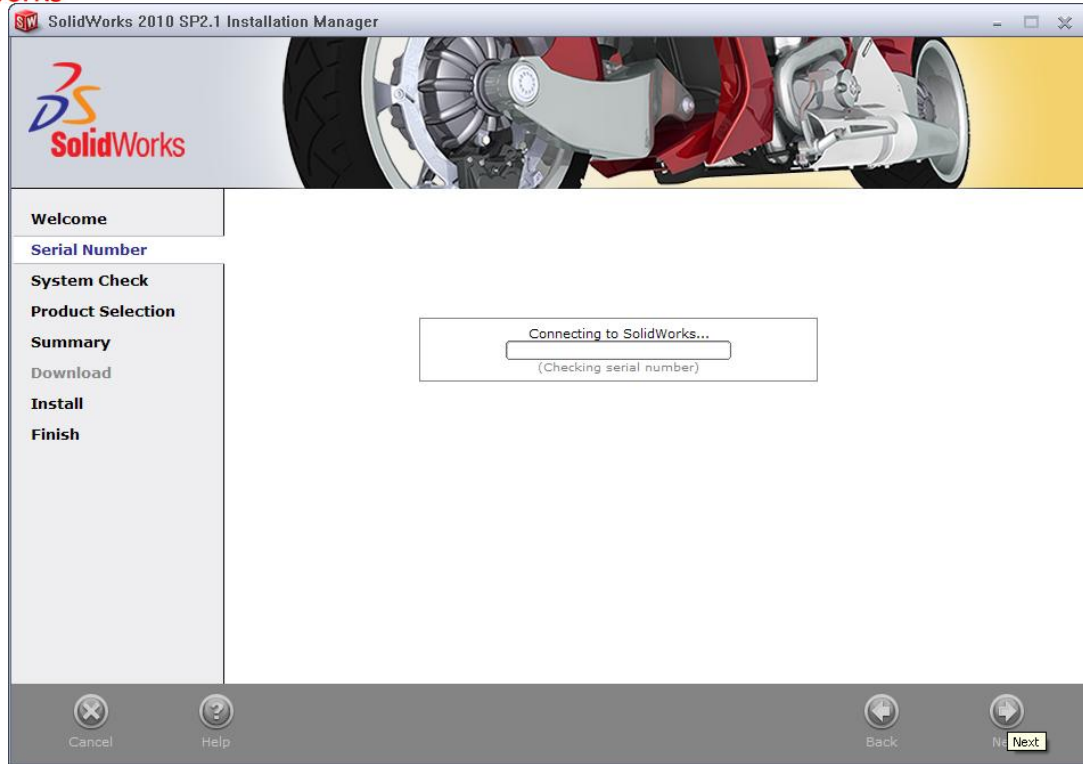


Figure 4.

6. At this stage we accept the defaults, and click Next and Next again to complete the install. (see Figure 5, 6.)

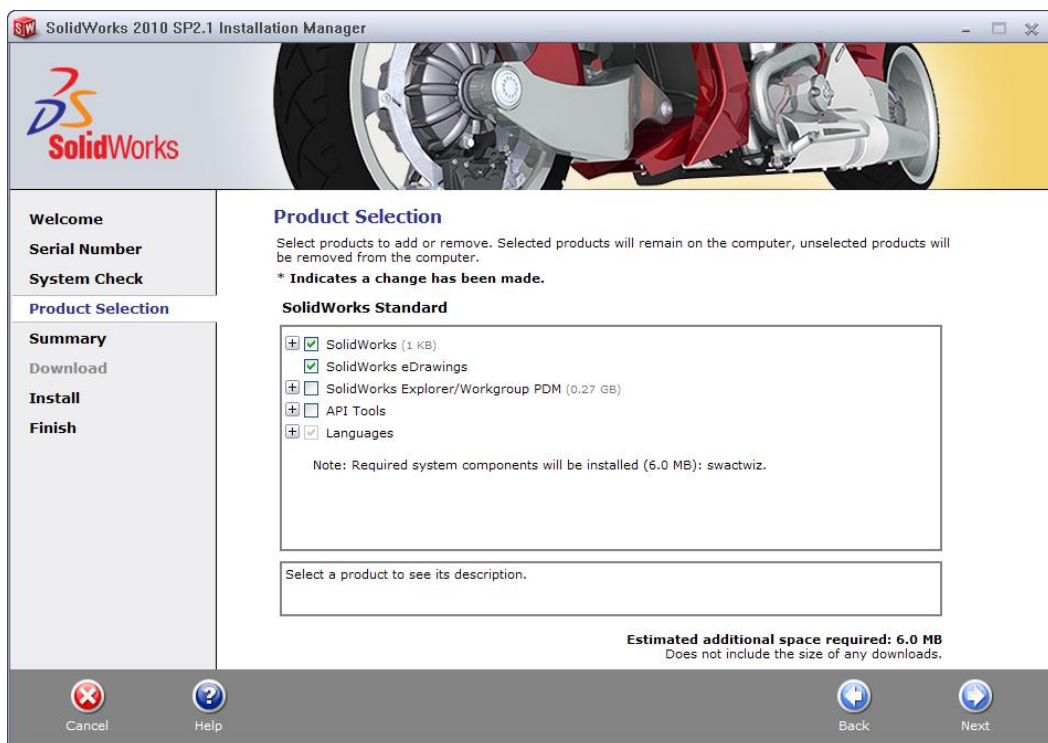


Figure 5.

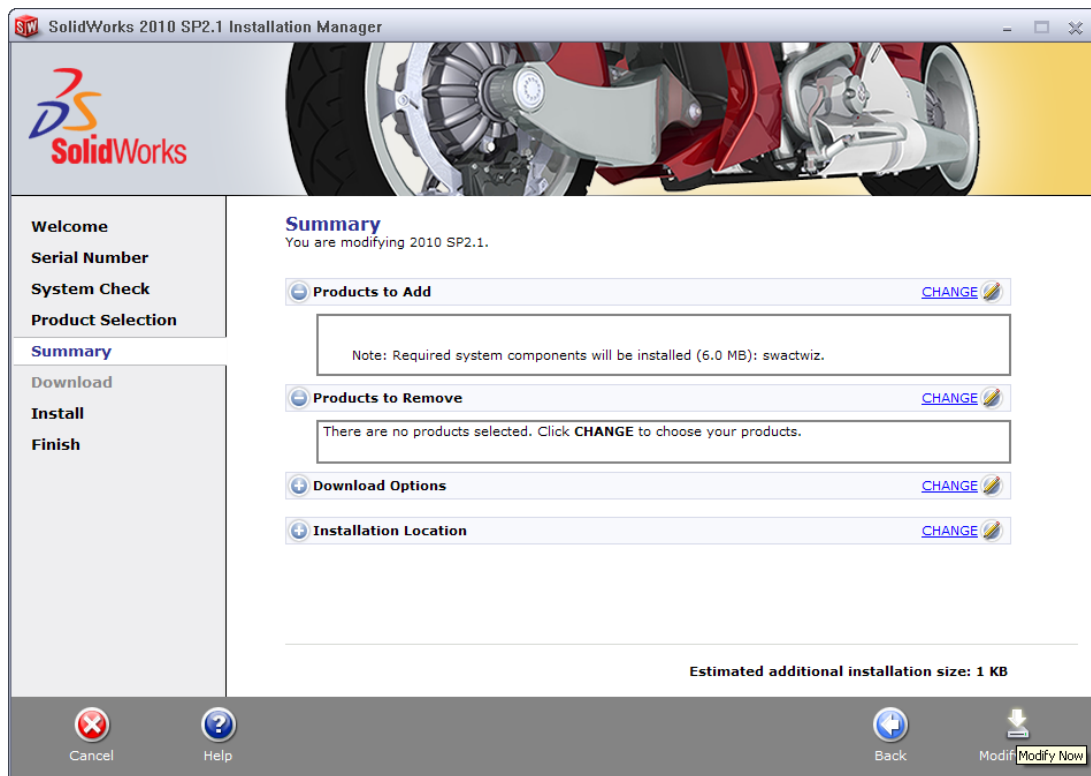


Figure 6.

7. Installation Complete. Deselect the first 3 selection boxes. Choose "Yes, I want to participate (RECOMMENDED)". Click "Finish" to complete and finish the Installation, as in Figure 7.

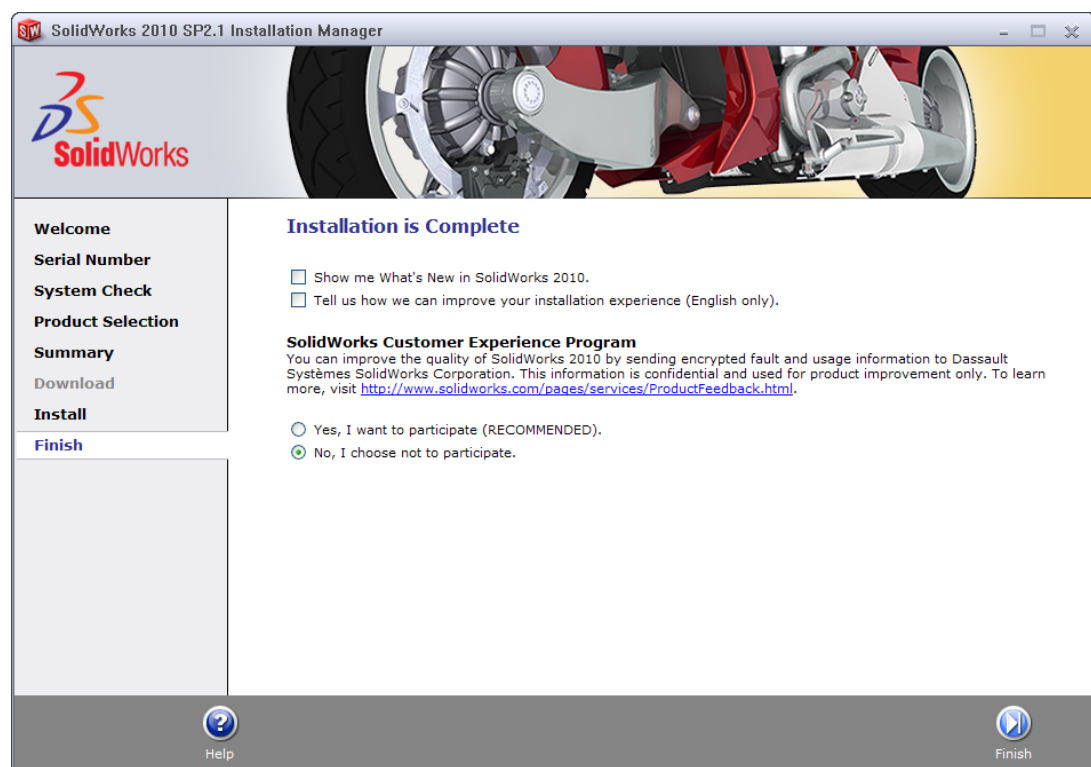


Figure 7.

8. Double-left Click on the “SolidWorks 2010 SP2.1” icon (Figure 8) to start SolidWorks 2010 as ADMINISTRATOR.

It could take up to two minutes for SolidWorks 2010 to start, **be patient**.



Figure 8.

9. SolidWorks Activation Wizard appears. Choose “I want to activate my SolidWorks product now”. Click Next to continue as in Figure 9.



Figure 9.

10. Choose to activate SolidWorks “Automatically over the Internet (recommended), and click Next ( Figure 10).  
If you do not have the Internet, choose “Manually via e-mail” and follow the onscreen instructions.

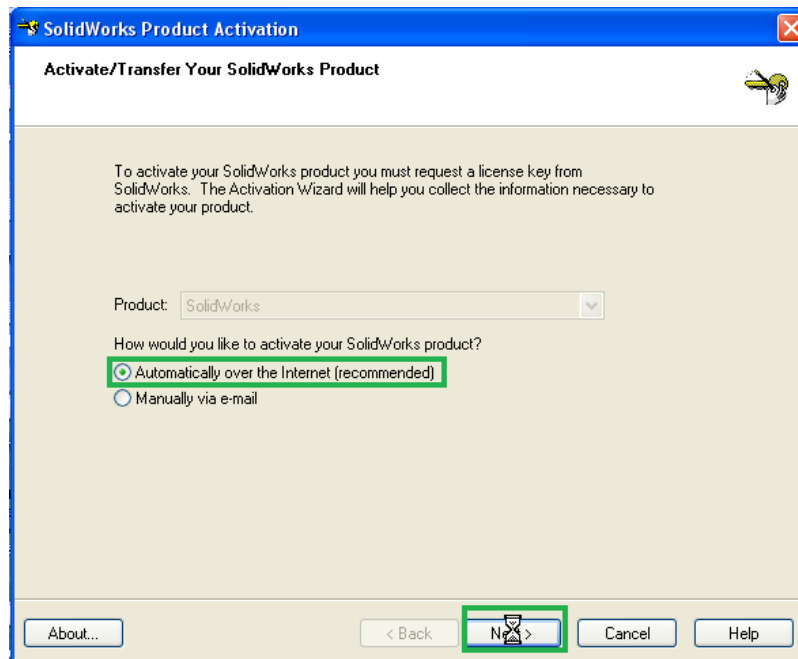
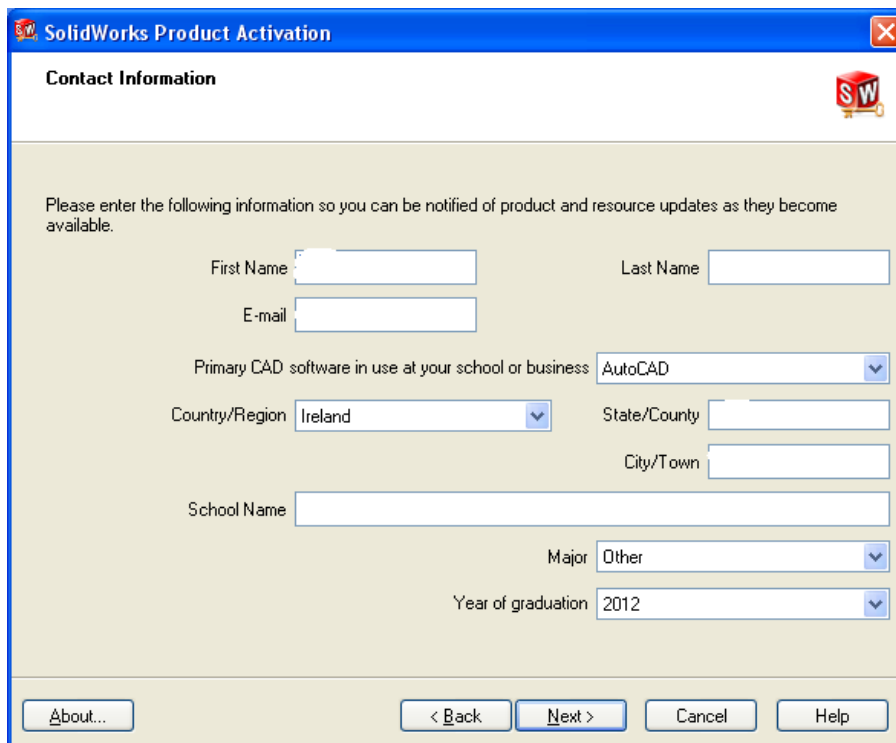


Figure 10.

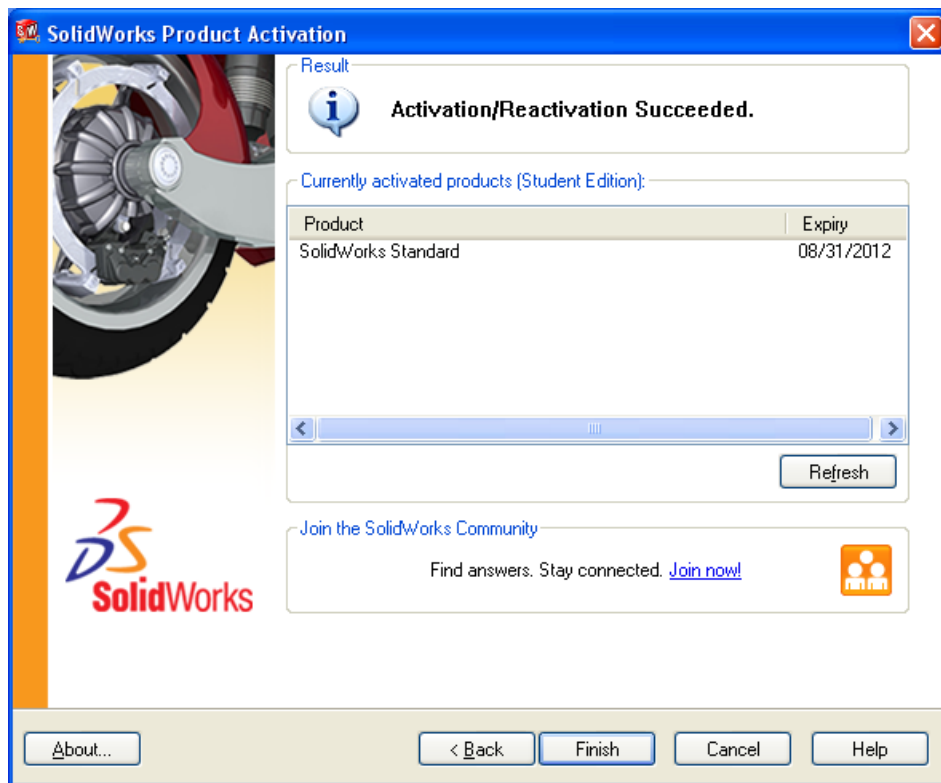
11. Enter your Student Details to Activate SolidWorks. As accurately as possible enter all the correct details. (see Figure 11) Note - An entry must be placed for all of the fields marked in red. Enter 000 for the ZIP/Postal Code



The image shows the 'SolidWorks Product Activation' dialog box, specifically the 'Contact Information' tab. The title bar reads 'SolidWorks Product Activation'. The main heading is 'Contact Information'. Below this, a message states: 'Please enter the following information so you can be notified of product and resource updates as they become available.' There are several input fields: 'First Name', 'Last Name', 'E-mail', 'Primary CAD software in use at your school or business' (dropdown menu set to 'AutoCAD'), 'Country/Region' (dropdown menu set to 'Ireland'), 'State/County', 'City/Town', 'School Name', 'Major' (dropdown menu set to 'Other'), and 'Year of graduation' (dropdown menu set to '2012'). At the bottom, there are four buttons: 'About...', '< Back', 'Next >', 'Cancel', and 'Help'.

Figure 11.

12. A dialogue box will appear to indicate that Activation has succeeded. Select 'Finish'.



13. You will see a dialogue box stating the expiring date will be 08/31/2012 which is the 31<sup>st</sup> of August 2012.

SolidWorks Student Design Kit 2010  
is now correctly installed and Activated  
using the new Serial Number

#### Errors

If an error occurs in the setup, reboot the computer and logon as Administrator. Start going through the install again. It will pick up where it left off.