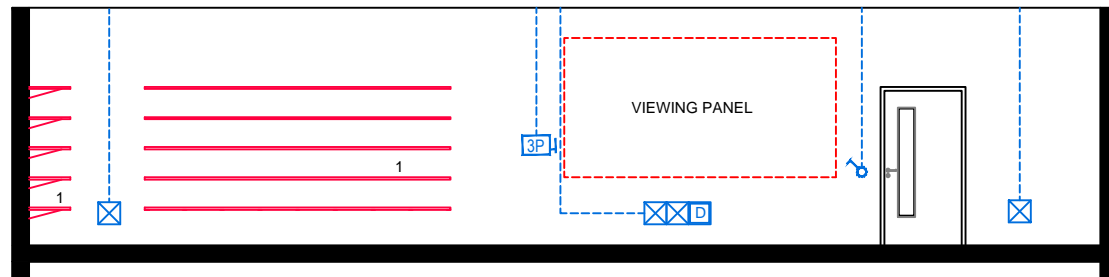
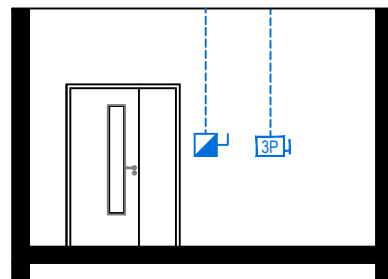


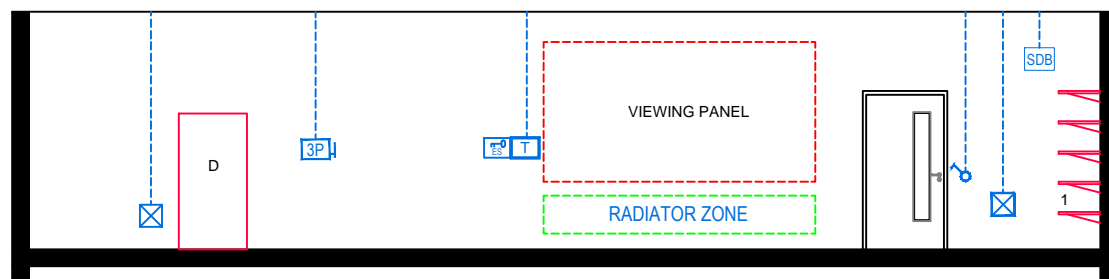
ELEVATION: A - A



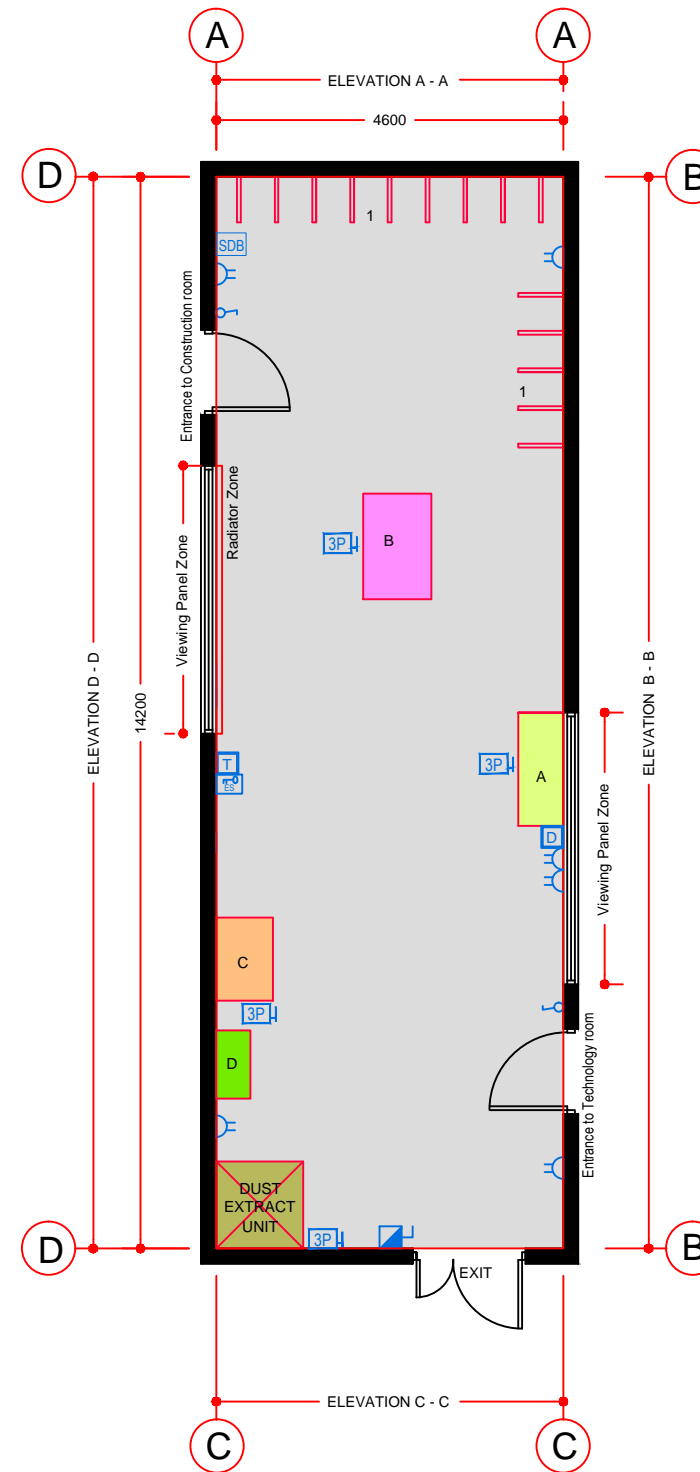
ELEVATION: B - B



ELEVATION: C - C



ELEVATION: D - D



FLOOR PLAN

**TECHNICAL NOTES**

1. This document provides guidance in relation to the requirements for a Wood/ Technology Machine & Preparation Area.
2. This document should be read in conjunction with the Technical Guidance Documents (TDGs) as published by the Department of Education & Skills.
3. Dado trunking shall feed from above in ground floor situations and from ceiling void below if room is located on upper floors.
4. Control heating to room using 2-port valve and lockable digital type electronic room thermostat.
5. External Dust Extraction Units are not acceptable and shall not be provided.
6. Workshops should be positioned next to machine and preparation area in the order shown below.

RT	RT	RT	RT	RT
19	21	19	20	22

**FURNITURE & EQUIPMENT SCHEDULES**

FIXED FURNITURE		Quantity	Code
1	Brackets bolted to wall, spaced at 500 c/c		BIB
LOOSE FURNITURE		Quantity	Code
D	Storage Cupboard 900 x 450 x 1800mm high	01	SC1
EQUIPMENT		Quantity	Code
A	Planer Thicknesser 1500x500 approx (3 phase)	01	WTMP/103
B	Circular saw 1400x900 approx (3 phase)	01	WTMP/102
C	Bandsaw 900x750 approx (3 phase)	01	WTMP/101

**BUILDING SERVICES LEGEND**

BUILDING SERVICES ENGINEERING SYMBOLS	Plan	Elevation
Light Switches		
Single Switched Socket Outlets		
Single Switched Socket Outlets (under worktop)		
Cleaner's Socket Outlet (not controlled by isolator)		
Twin Switched Socket Outlets		
Water Boiler Point		
Cooker or Built-in Oven Point		
Data Projector Isolating Switch		
Single Phase Power Supply		
3 Phase Power Point		
Mechanical Ventilation Power Point		
Key Operated Isolating Switch on ICT Installation only		
Key Operated Isolator/ knockout Button on Electrical Supply		
Emergency Knockout Button on Electrical Supply		
Gas Pressure Proving System Control Panel		
Emergency Knockout Button on Gas Supply		
PA Loudspeaker		
Telephone Point		
Network Point		
Projector Audio Faceplate (PAF)		
Sub-distribution Board (possible location)		
Dado Rail Trunking		
Dado Trunking (vertical drop/ rise)		
Radiator		

- GENERAL NOTES:**
1. This drawing is for information and reference only, designers are responsible for co-ordination issues and compliance with Building Regulations.
  2. Doors shall provide 850 mm clear opening width, except where indicated otherwise.
  3. Do not scale the drawing. Use figured dimensions only. All dimensions given are in millimetres.
  4. All room dimensions are "internal dimensions".
  5. Area = net internal area of the room.
  6. All elevations are internal room elevations.
  7. Any discrepancies between this document and other documents shall be reported to the Department.

**POST-PRIMARY SCHOOL ROOM LAYOUTS:**

**WOOD / TECHNOLOGY MACHINE & PREPARATION AREA (65 m<sup>2</sup>)**

DRG NO: <b>RT - 021</b>	ISSUE NO: <b>02</b>	SCALE: <b>1: 100 @ A3</b>	DATE: <b>Sept 2011</b>
----------------------------	------------------------	------------------------------	---------------------------

**AN ROINN OIDEACHAIS AGUS SCILEANNA  
THE DEPARTMENT OF EDUCATION AND SKILLS**

Planning and Building Unit

